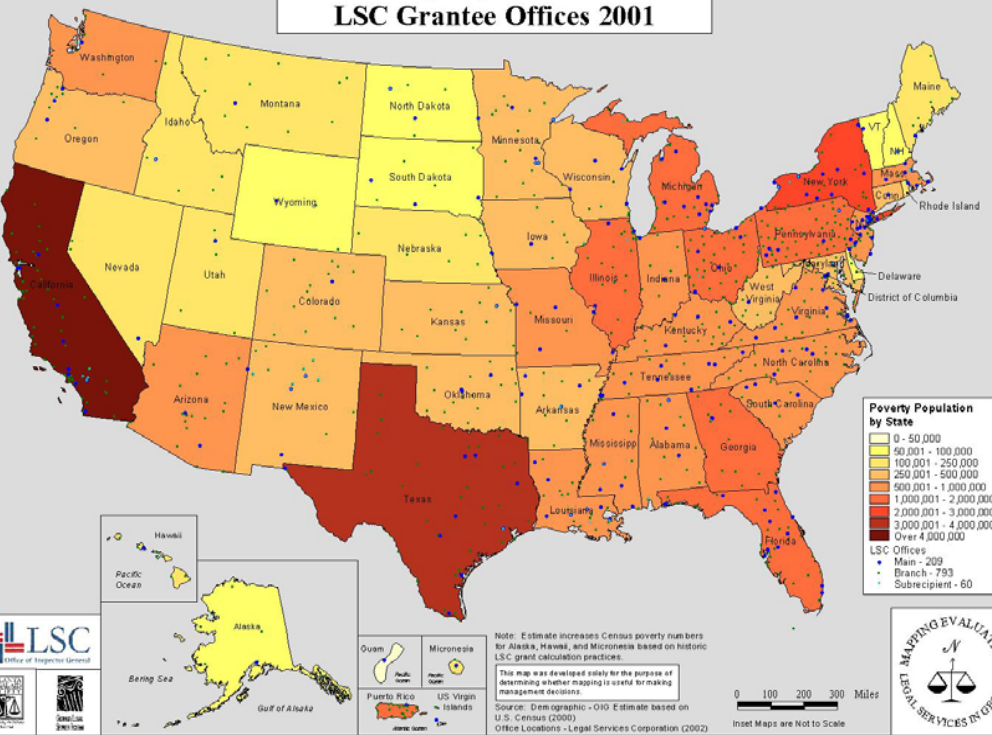


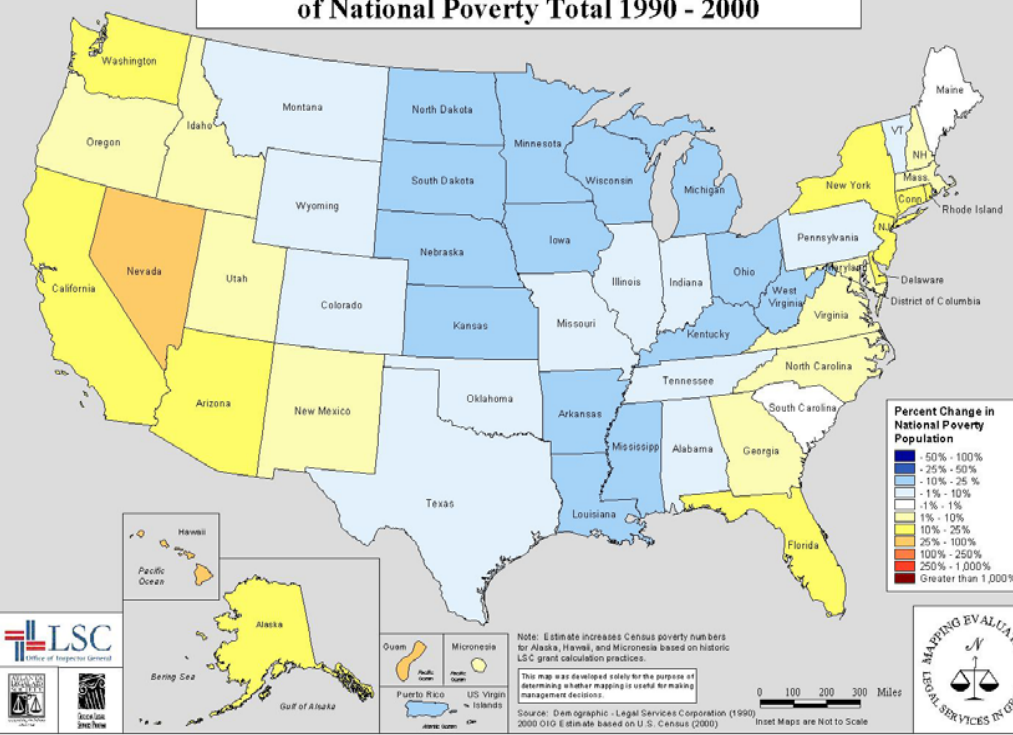
Evaluation Of Mapping

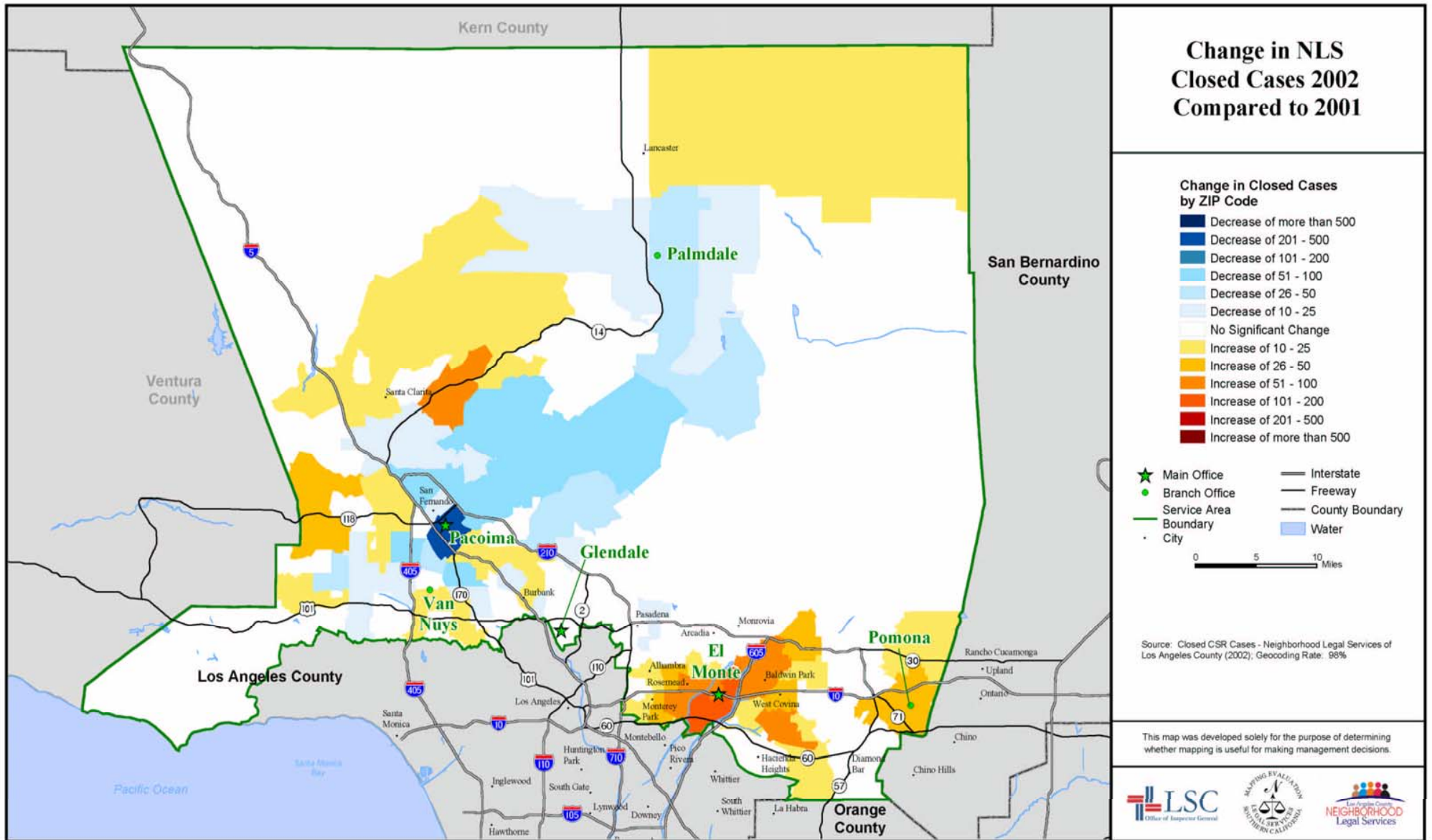
Office of Inspector General

U.S. Poverty Population 2000 and LSC Grantee Offices 2001

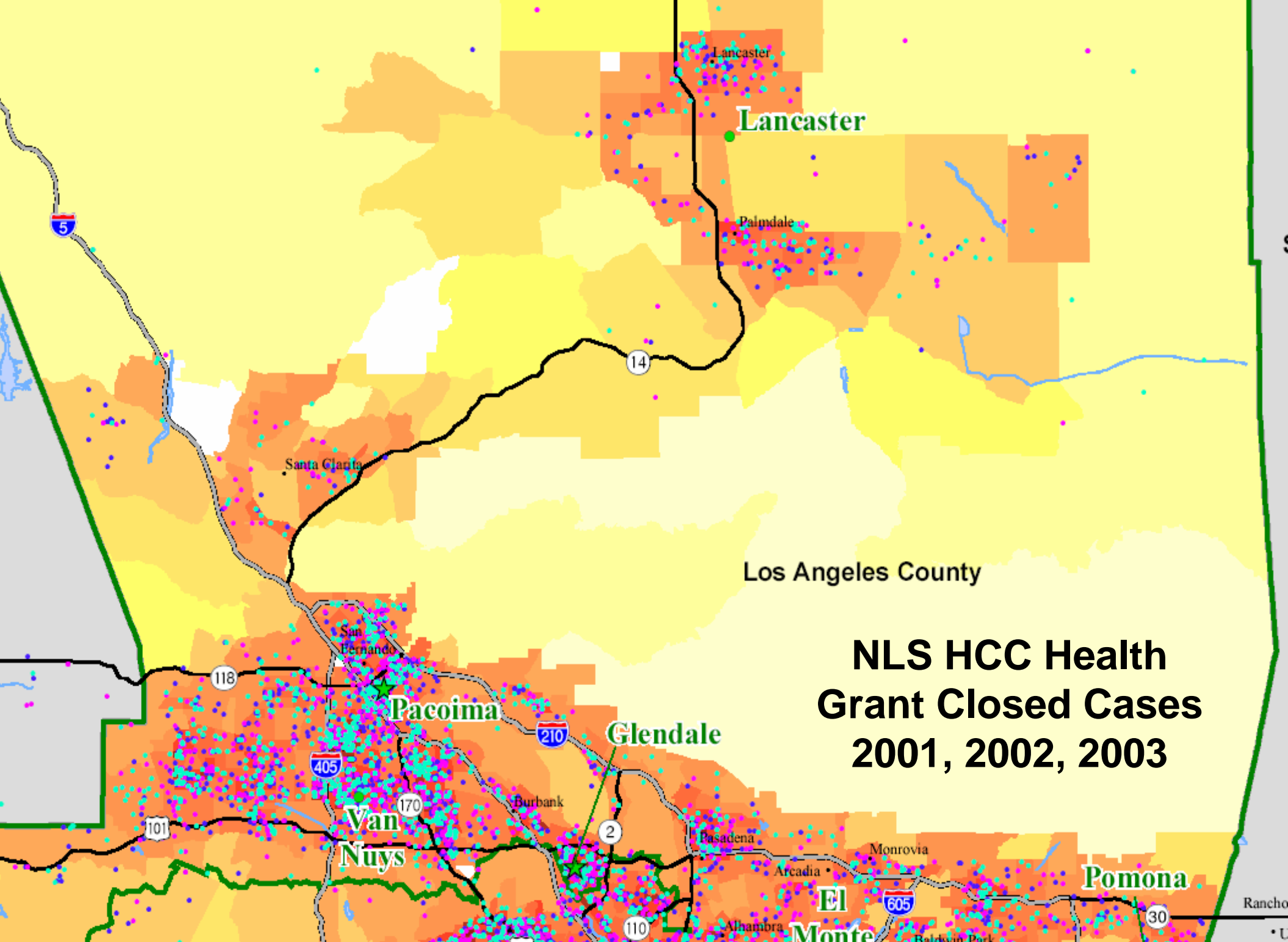


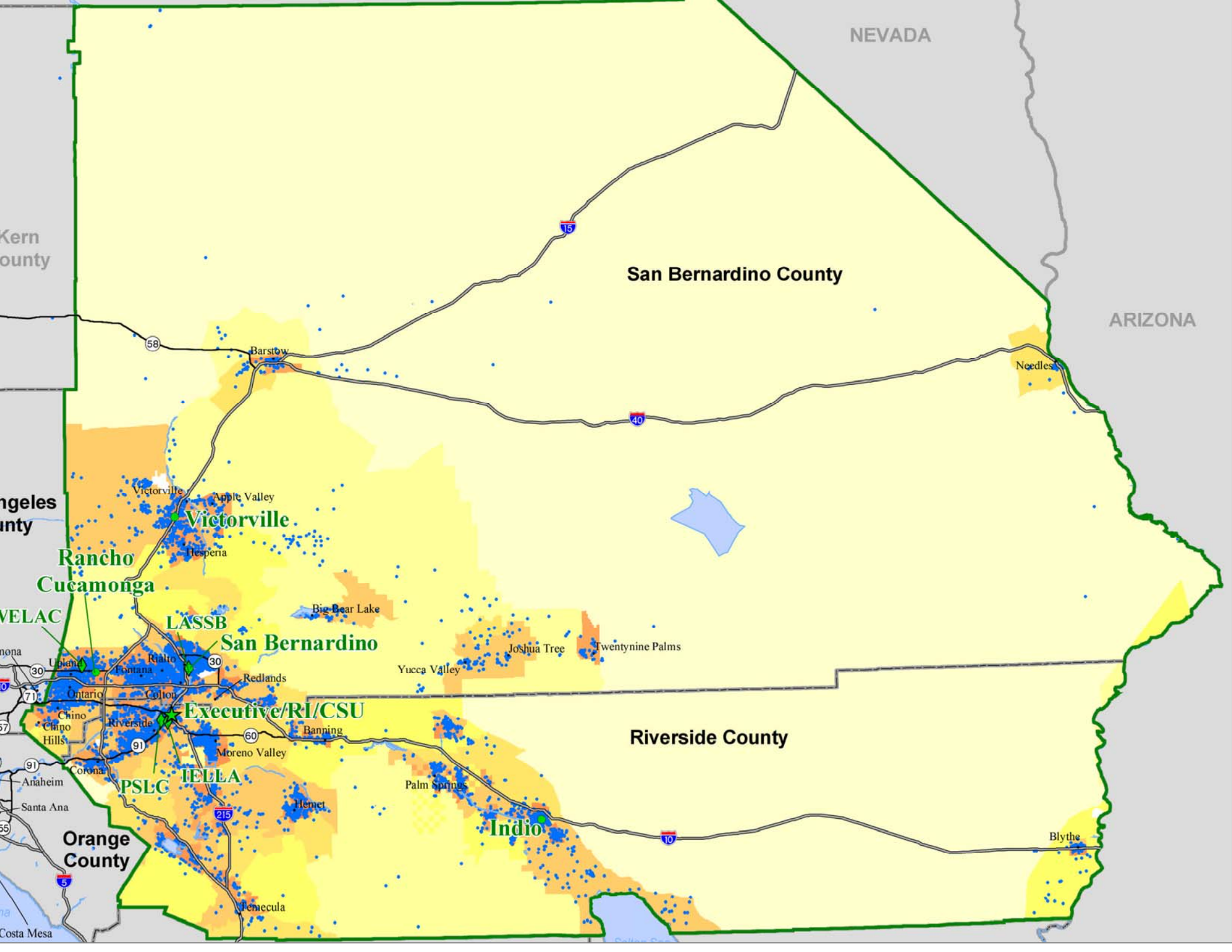
Change in State Poverty Population as a Percentage of National Poverty Total 1990 - 2000





CA30-CGZ-37-v2



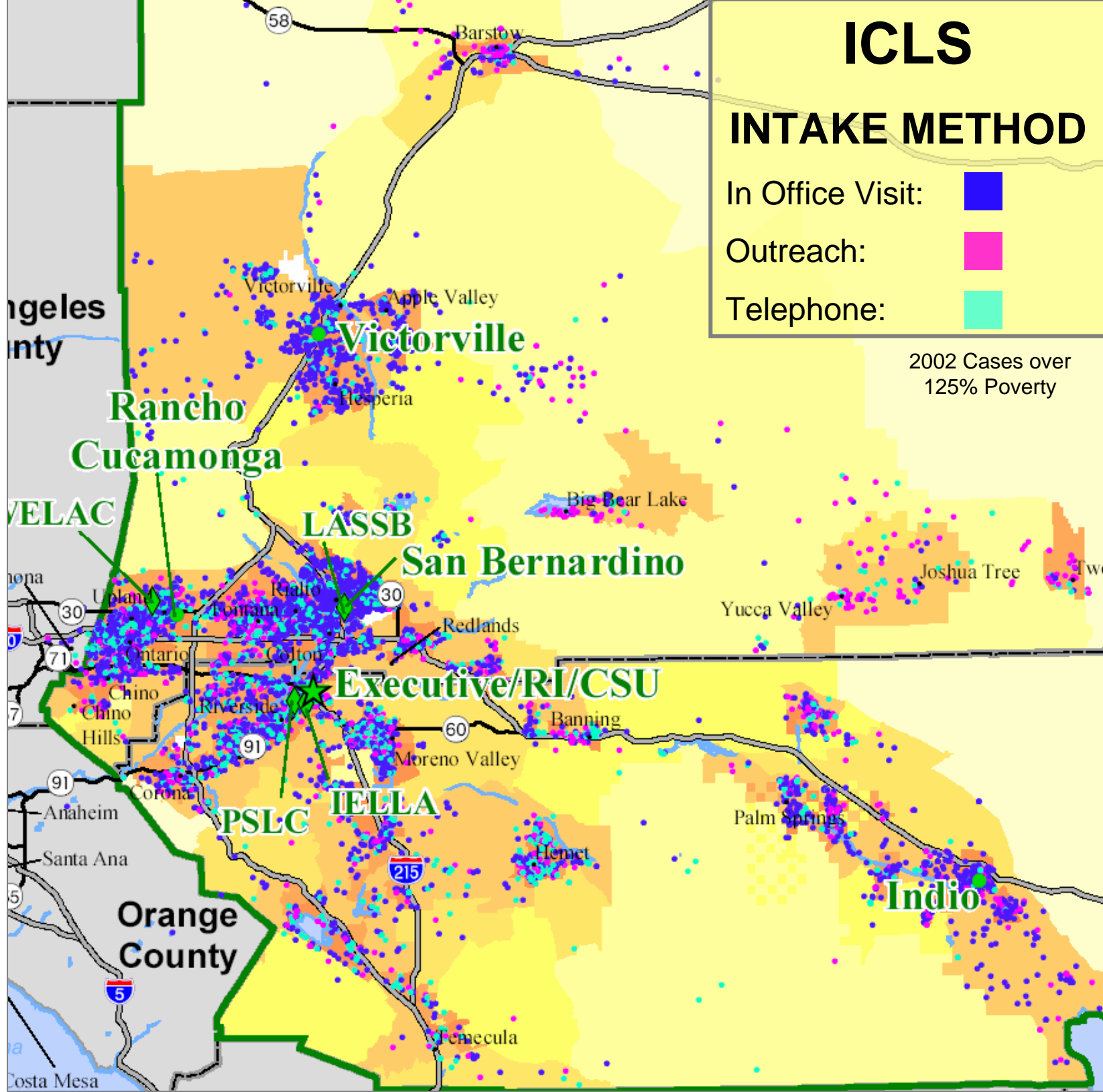


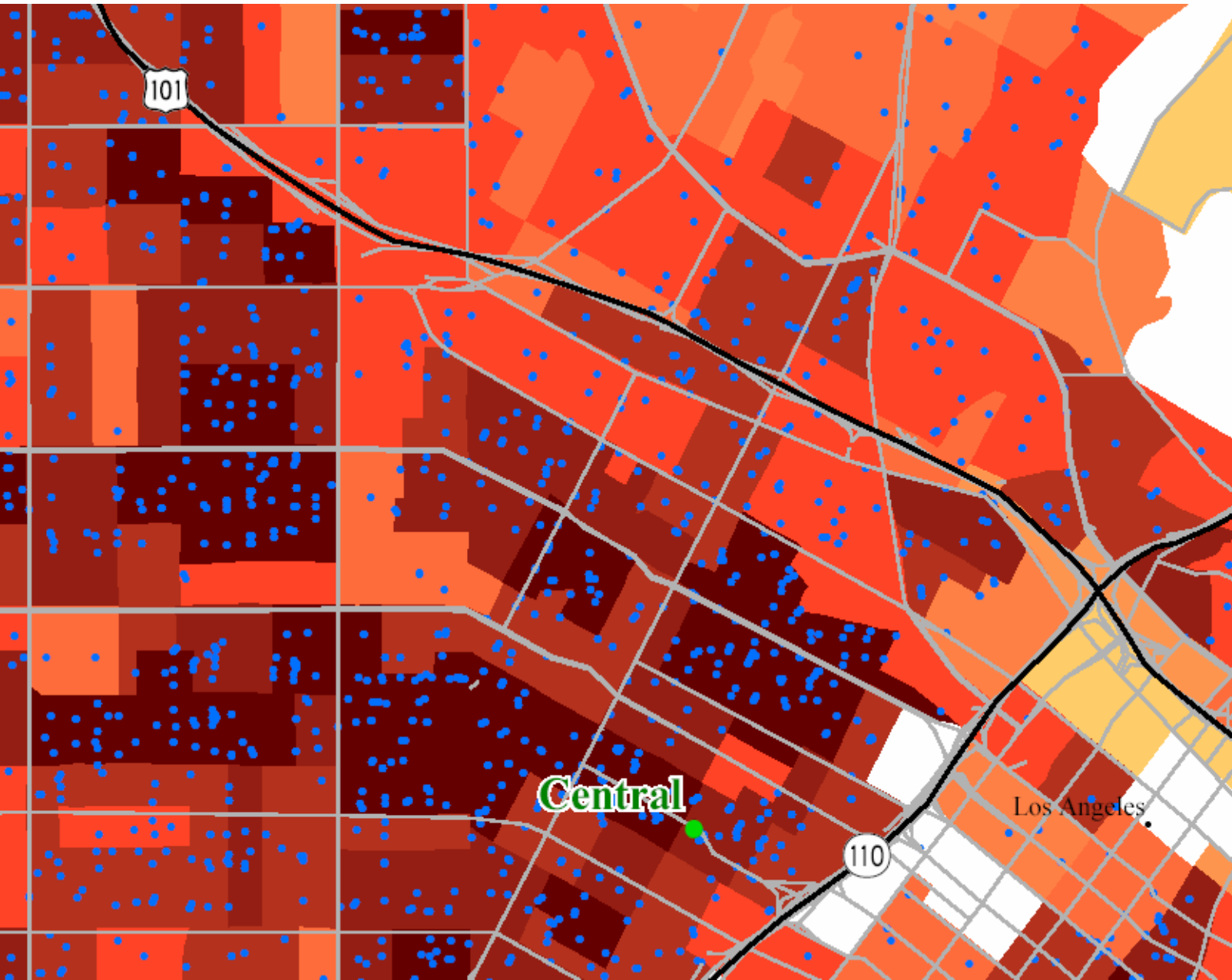
ICLS

INTAKE METHOD

- In Office Visit: ■
- Outreach: ■
- Telephone: ■

2002 Cases over 125% Poverty





LAFLA Closed Cases 2002 to 125% Poverty Population 2000

Number of Persons Below the
125% Poverty Level per Square Mile
by Census Tract

0	251 - 1,000
Less than 1	1,001 - 2,500
1 - 5	2,501 - 5,000
6 - 10	5,001 - 10,000
11 - 25	10,001 - 15,000
26 - 100	15,001 - 25,000
101 - 250	Over 25,000

Closed Cases by Location

- 1 Dot = 1 Case
- ★ Main Office
- Branch Office
- Service Area Boundary
- City Boundary
- Interstate
- Freeway
- County Boundary
- Water



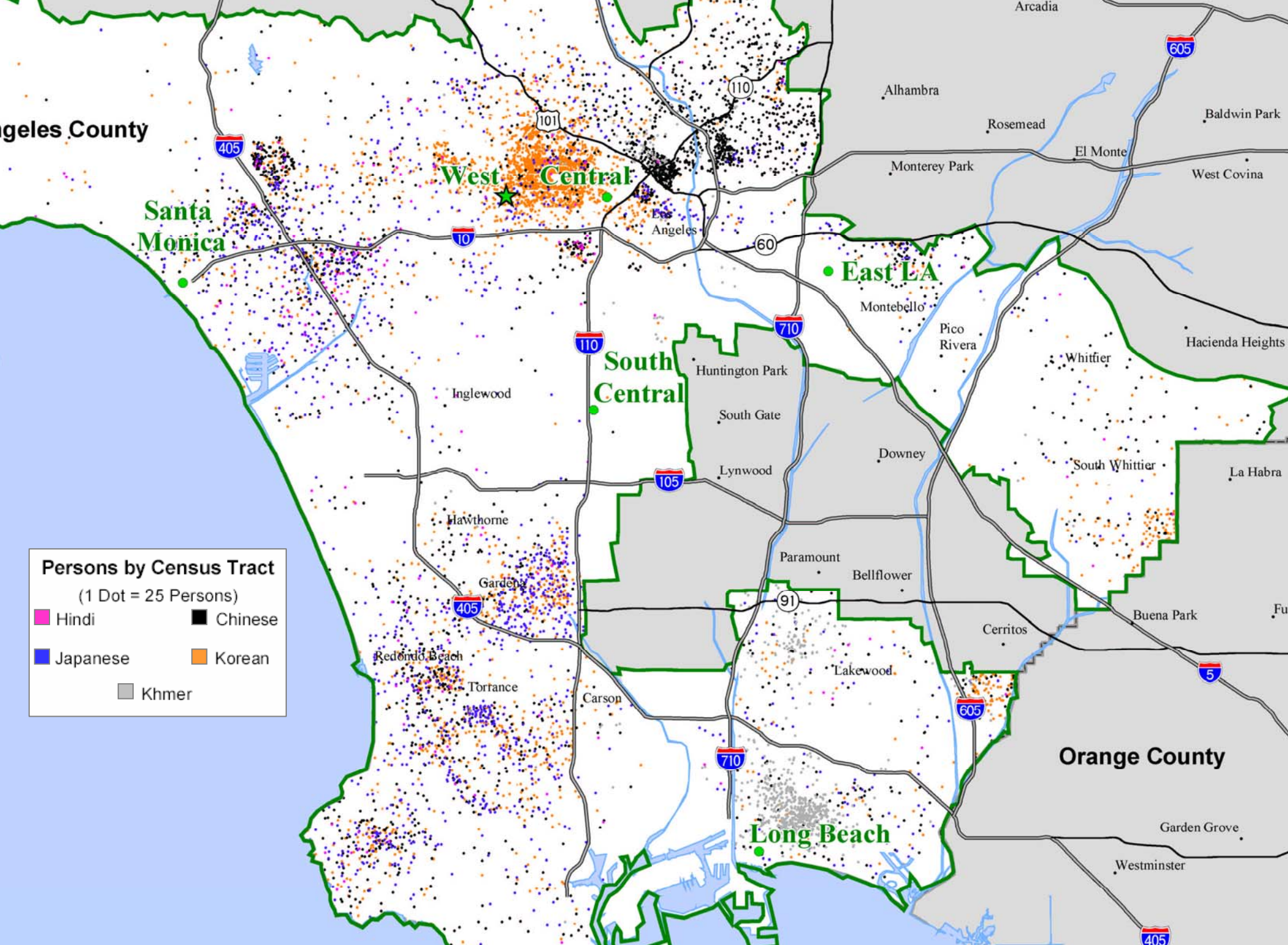
Note 1: Income level is only one factor in determining client eligibility, at or below 125% of the poverty level. Other factors may include asset ceilings, alien status, citizenship, conflict of interest, recipient sources, or unique client circumstances that allow recipients to use our discretion in providing services. See 45 CFR Parts 1601-1644.

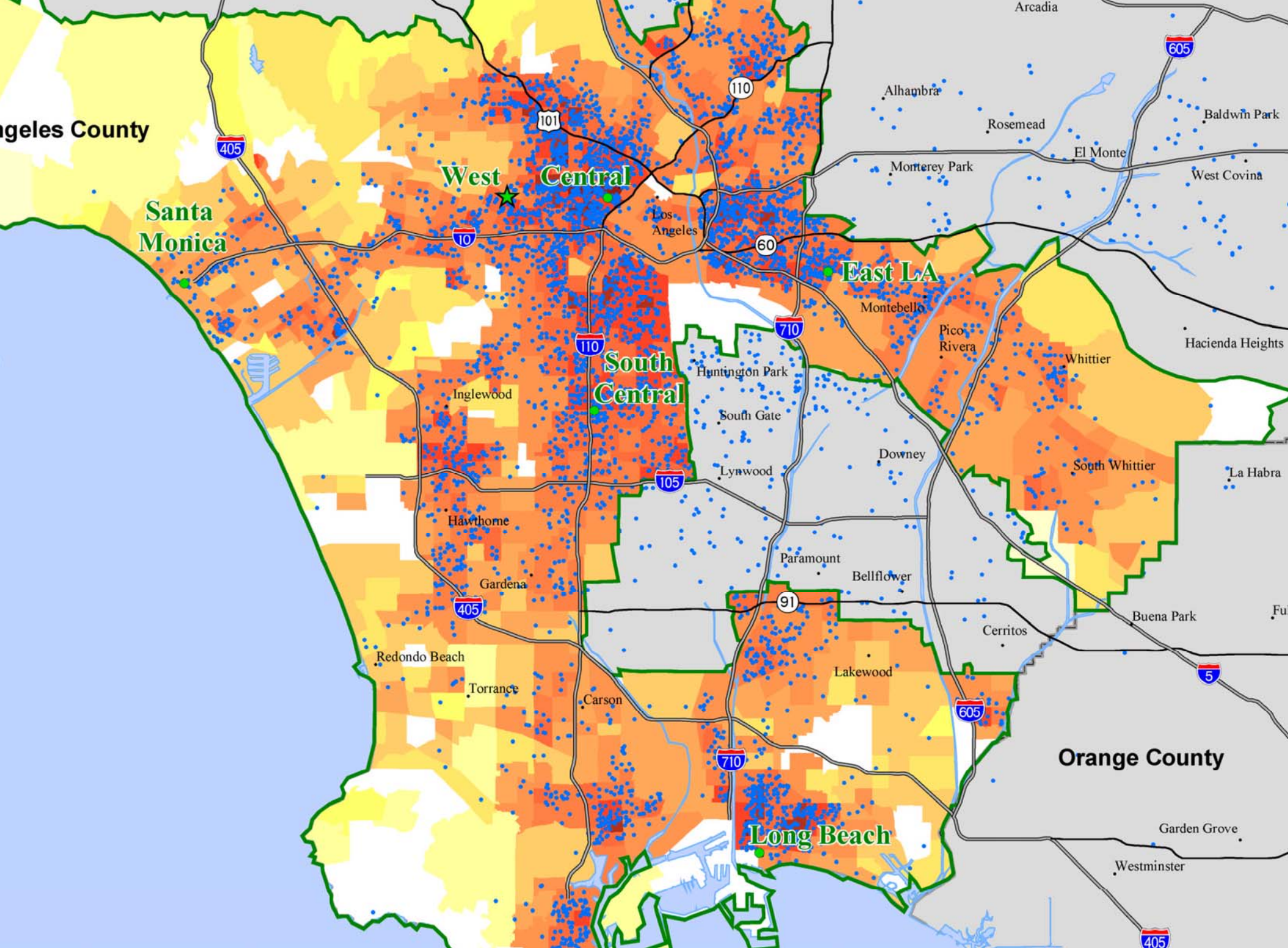
Note 2: Inset maps are not to scale.

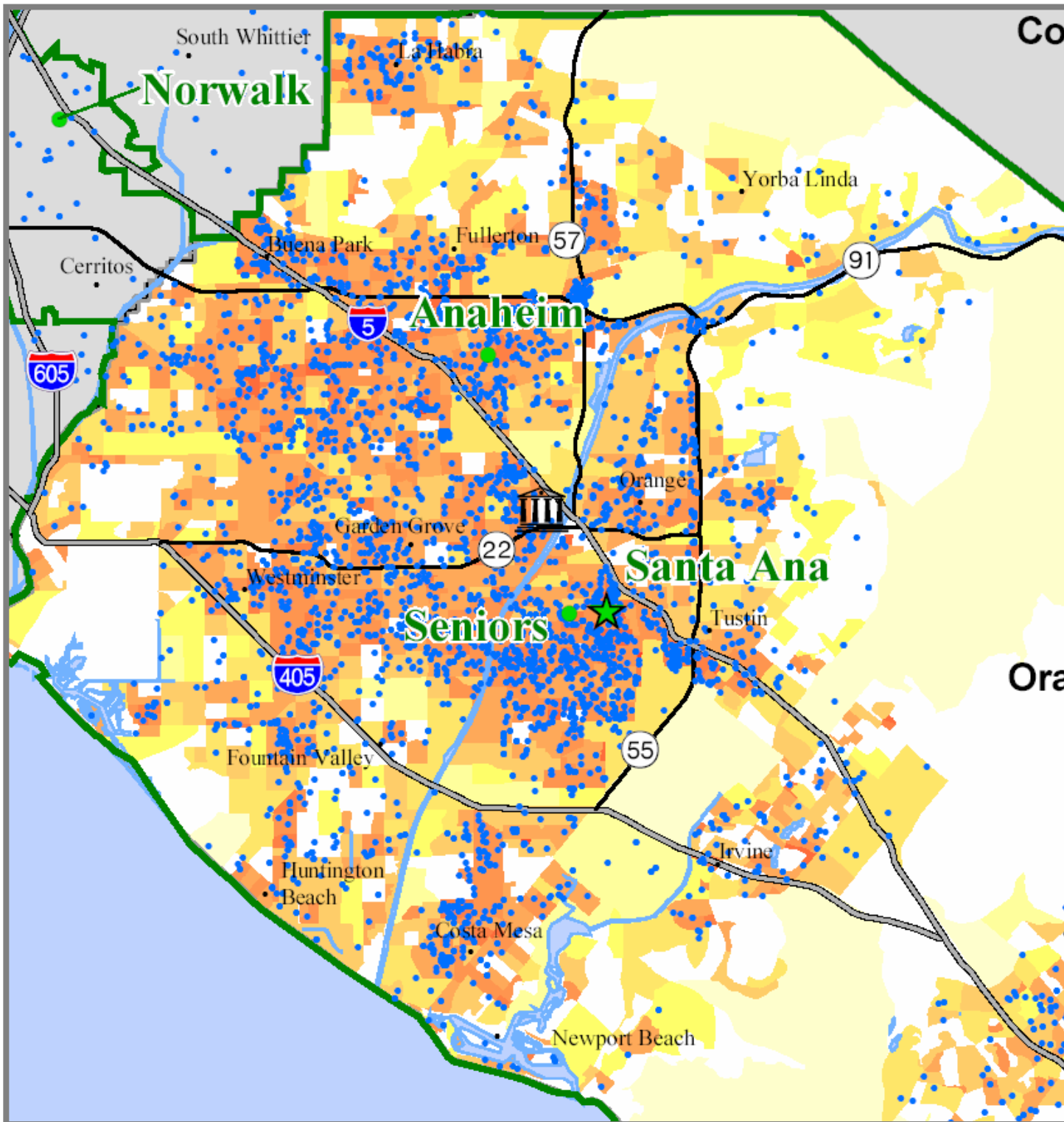
Source: Closed CSR Cases - Legal Aid Foundation of Los Angeles (2002); Coding Rate: 98%
Demographic - U.S. Census Bureau (2000)

This map was developed solely for the purpose of determining whether mapping is useful for making management decisions.



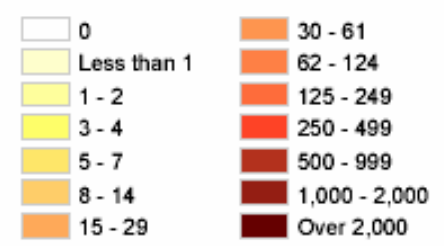






Orange County Low-Income Legal Needs and Services

Number of LASOC Closed Cases per Square Mile by Census Block Group

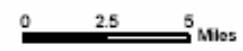


Low Income Pro Se Litigants by Location (Superior Court Family Cases)

• 1 Dot = 1 Litigant

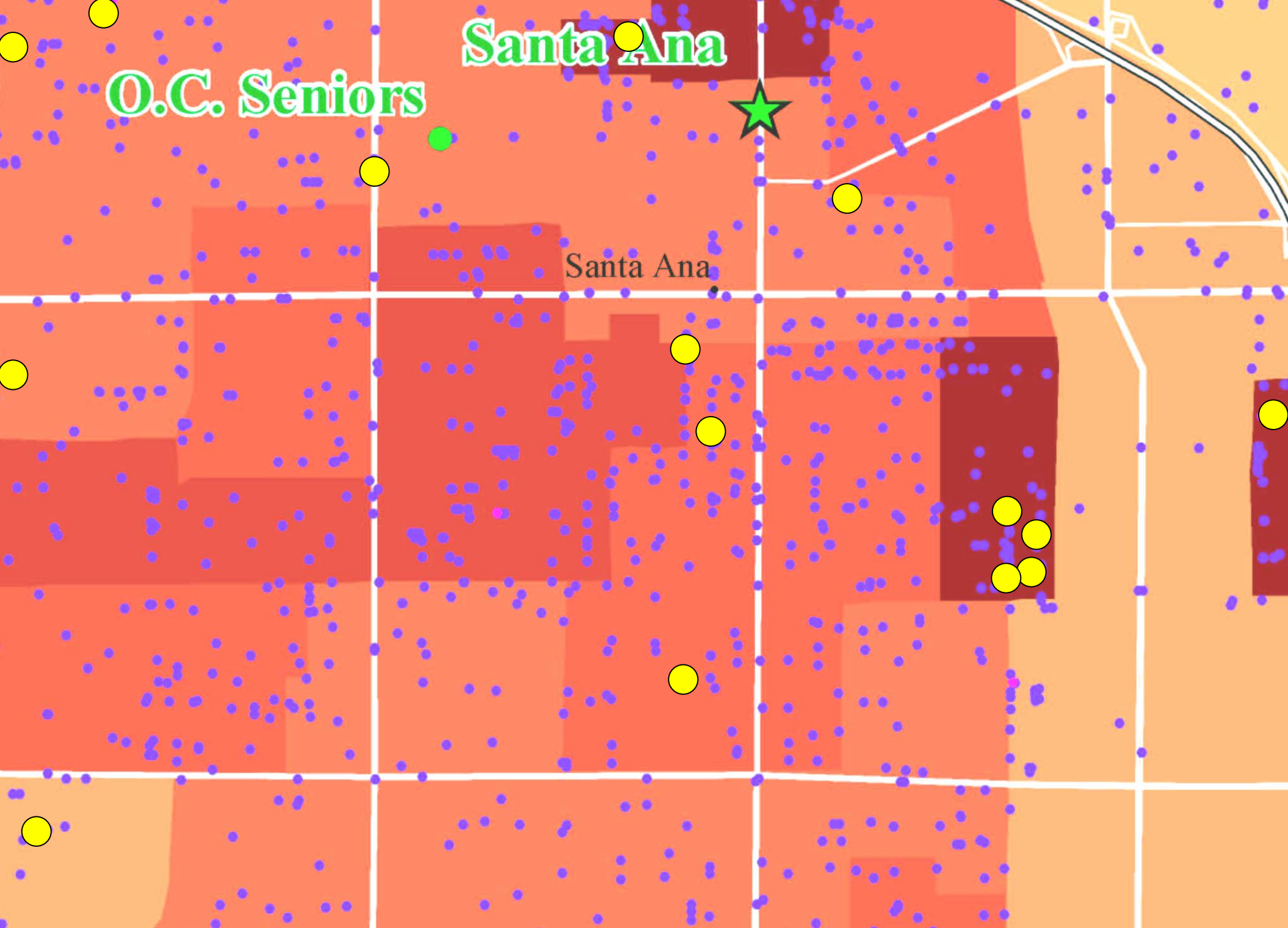
Orange County Superior Court

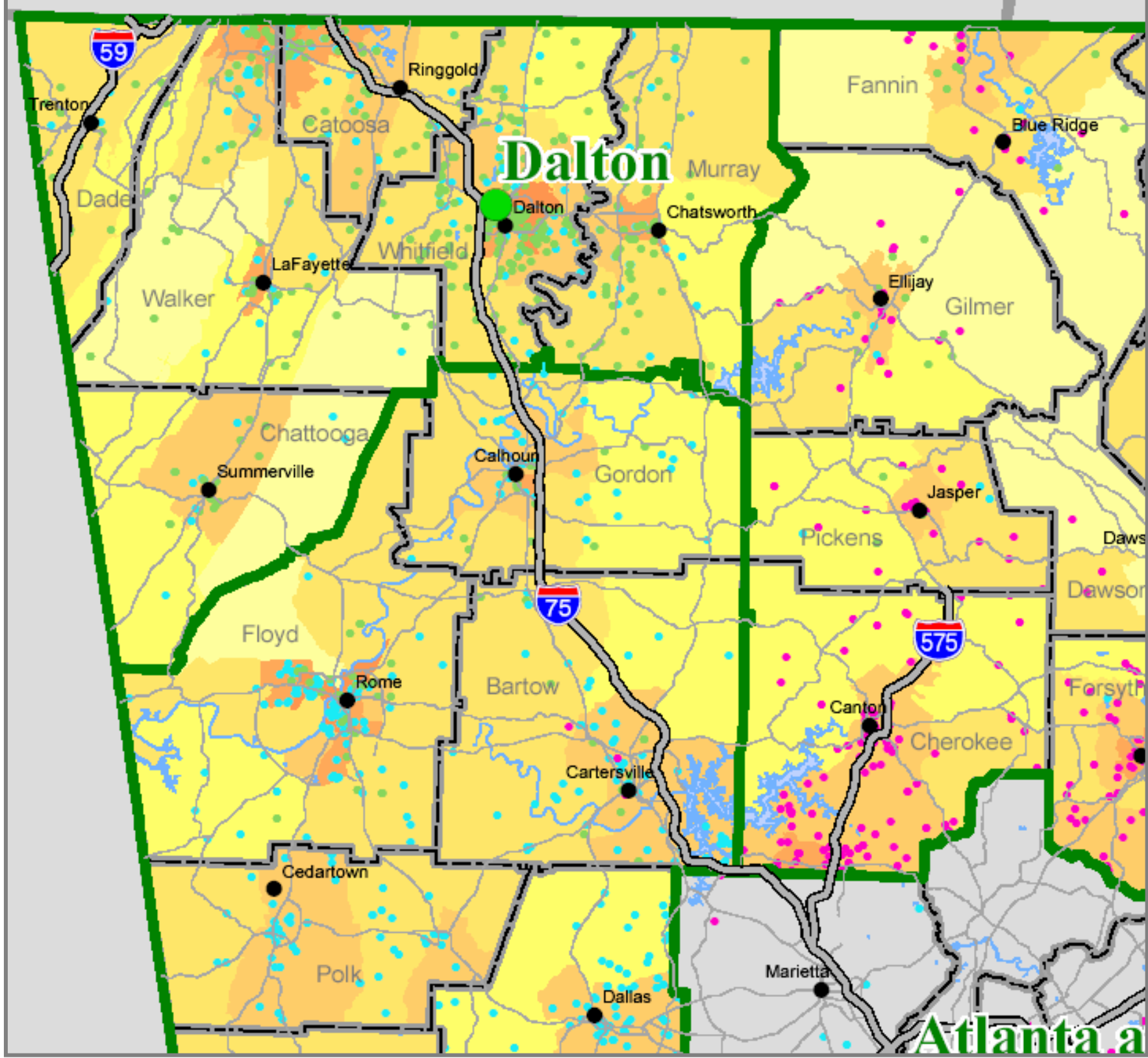
- ★ Main Office
- Branch Office
- Service Area Boundary
- City
- Interstate
- Freeway
- County Boundary
- Water

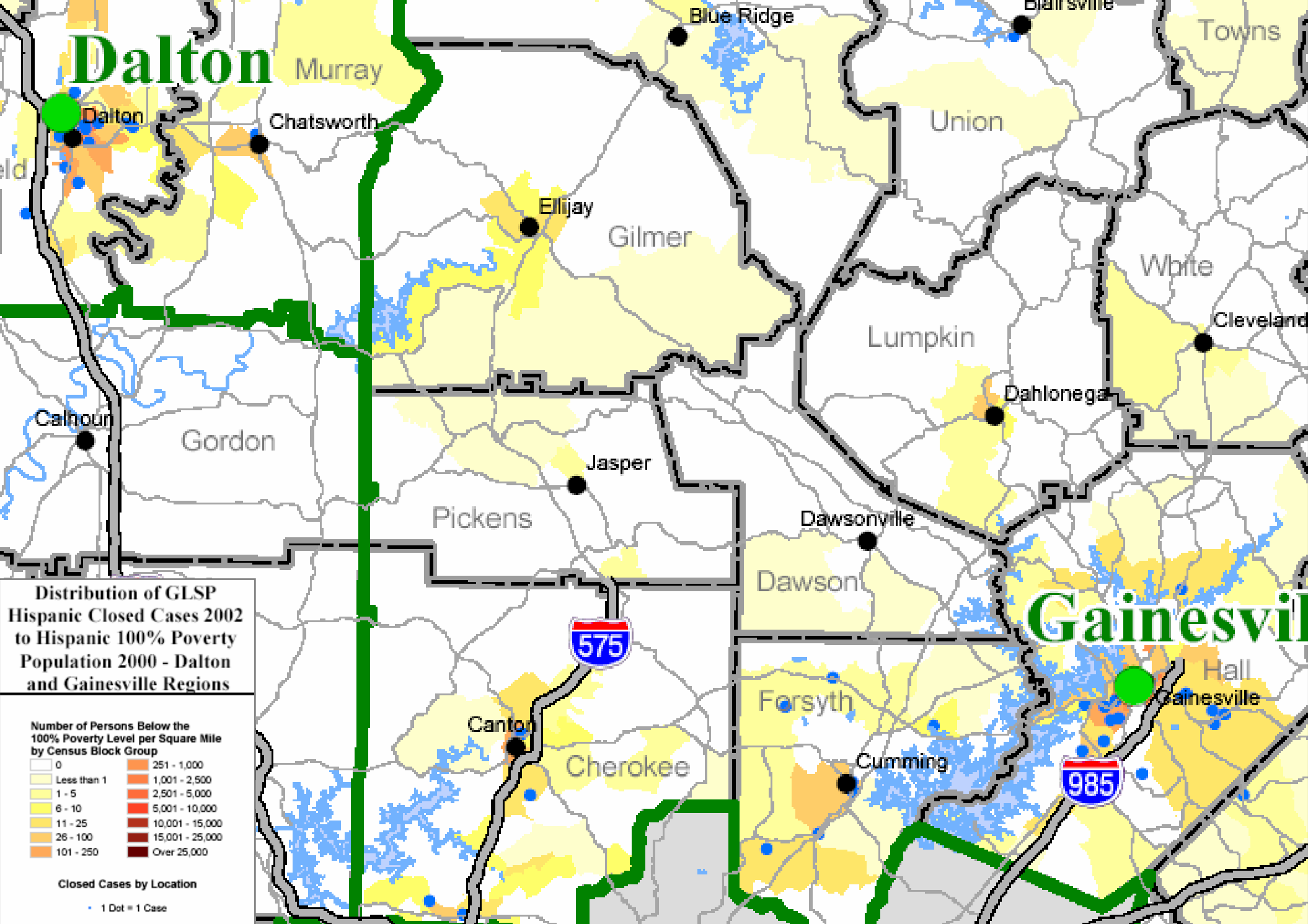


Source: Closed CSR Cases - Legal Aid Society of Orange County (2002);
 Geocoding Rate: 99%
 Low Income Pro Se Litigants: Superior Court of Orange County (2002)

This map was developed solely for the purpose of determining whether mapping is useful for making management decisions.

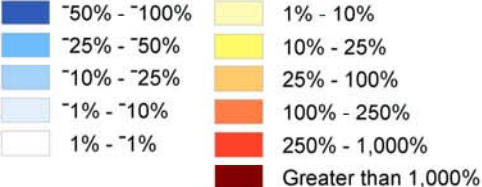










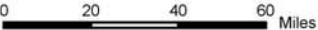


Percent Change in Georgia Poverty Population 1990-2000

Percent Change in Population by County



-  ALAS Office
-  GLSP Office
-  Service Area Boundary
-  Interstate
-  County Boundary
-  Water



Source: Demographic - U.S. Census Bureau (1990 and 2000)

This map was developed solely for the purpose of determining whether mapping is useful for making management decisions.

